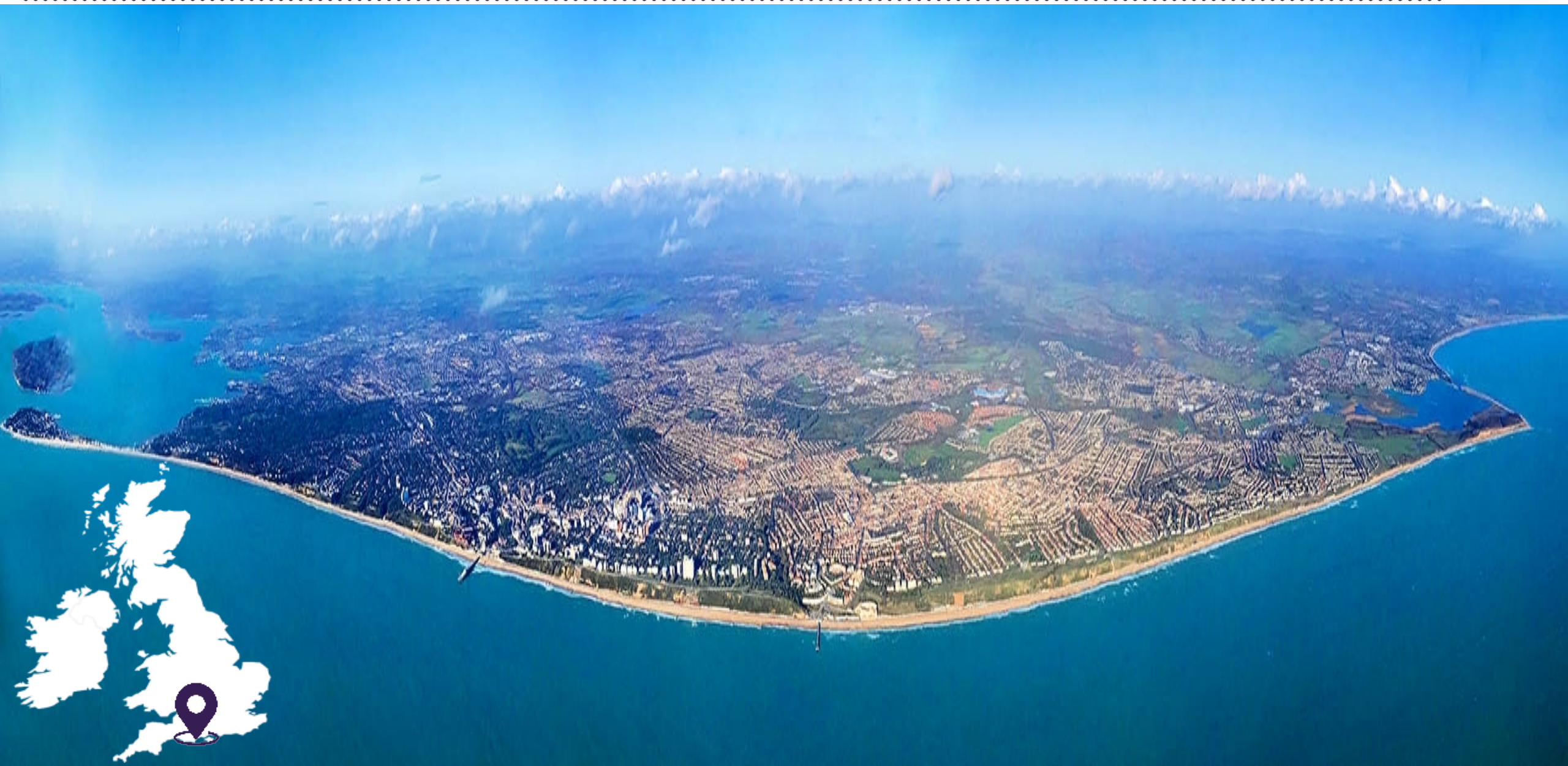


# Bournemouth Christchurch & Poole

---



# Bournemouth, Christchurch & Poole



- BCP population: 404,100
- BCP+supported urban hinterland population: +500,000
- GVA £12.35bn
- Over 15,375 businesses
- Providing 189,175 jobs

## Significant sectors with growth potential:

- Advanced Engineering & Manufacturing (aeronautics and marine)
- Culture, Creative and Digital Technology
- Financial Services, Fintech & Insurance
- Health, Wellbeing & Social care
- Tourism, Retail & Hospitality

## Assets:

- 3 Universities & 1 FE college
- Bournemouth International Airport
- Port of Poole
- 14 miles of south-facing beach and seafront
- 19% of area is in a Site of Special Scientific Interest
- AFC Bournemouth
- International Convention Centre

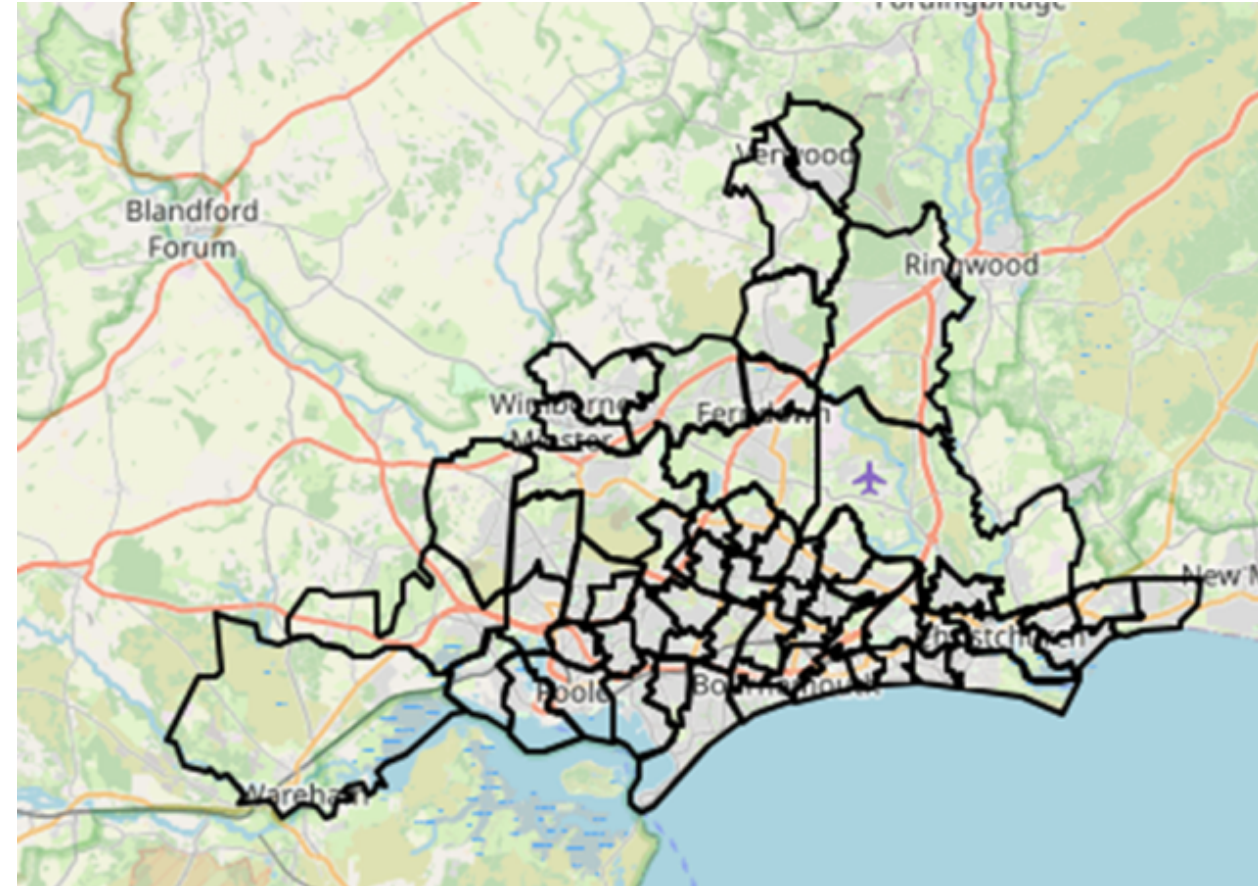
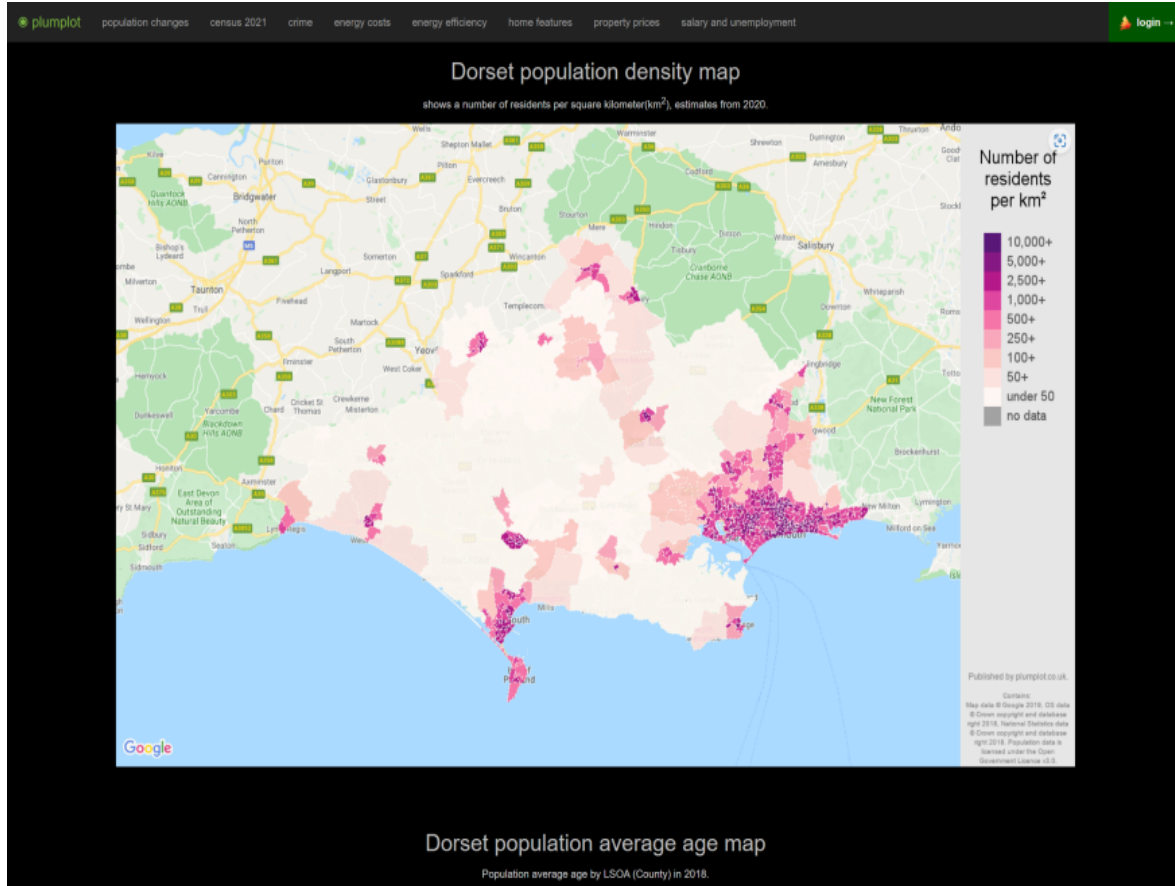
## A devolution deal could help us overcome our challenges:

- Congestion and poor transport infrastructure
- Connectivity (digital and physical) is weak
- Constrained access to new skills
- Ageing population (20years older than rest of UK)
- High house prices x10+ compared to national average x8+
- Restricted opportunities for new housing growth
- Coastal erosion, pockets of environmental and biodiversity degradation
- Achieving net-zero ambitions and transition to green economy
- **Productivity is low compared with national average**



# Bournemouth, Christchurch & Poole

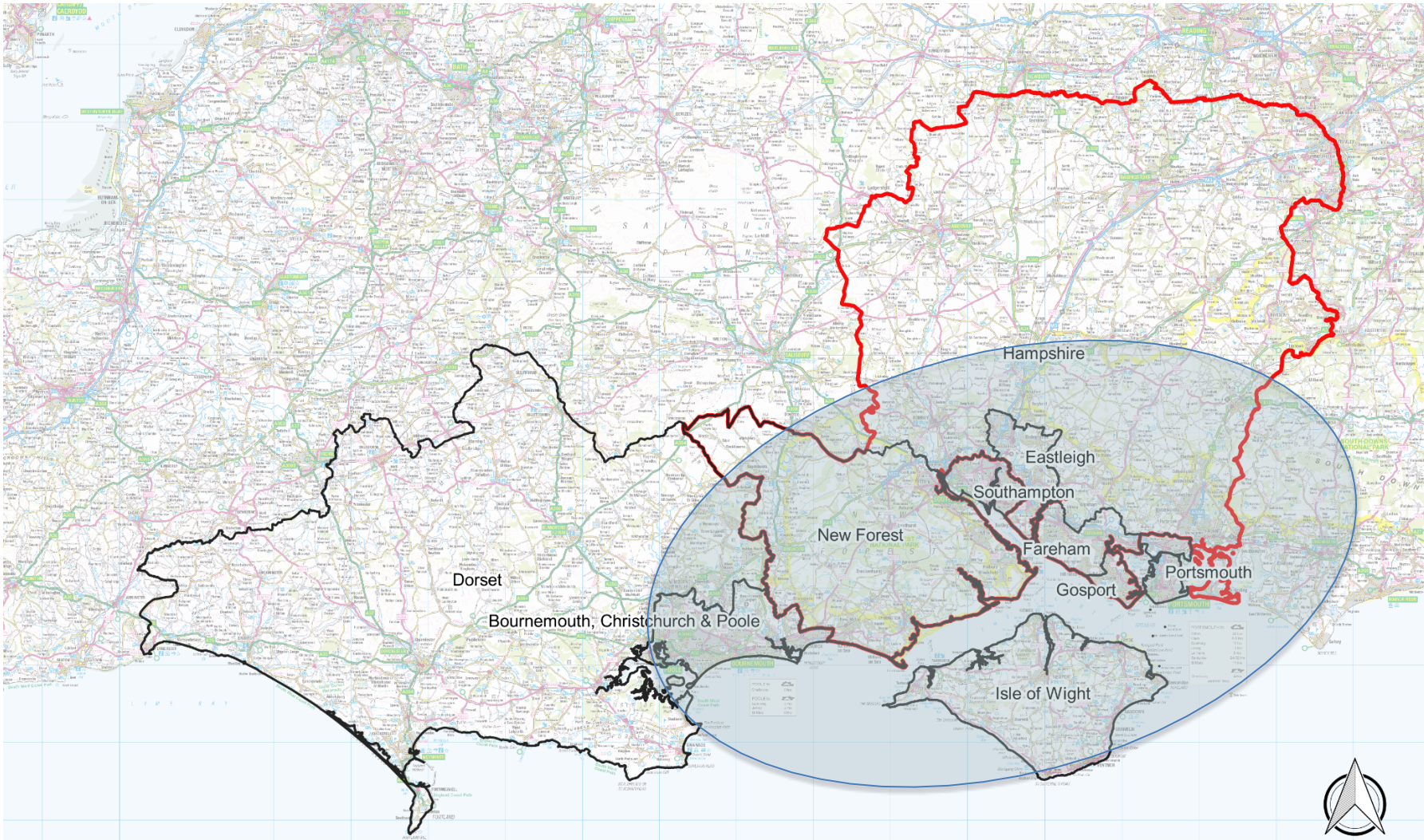
BCP is a distinct area, supporting an urban hinterland, giving a population of +500,000 people





# Devolution Options Explored: Central South

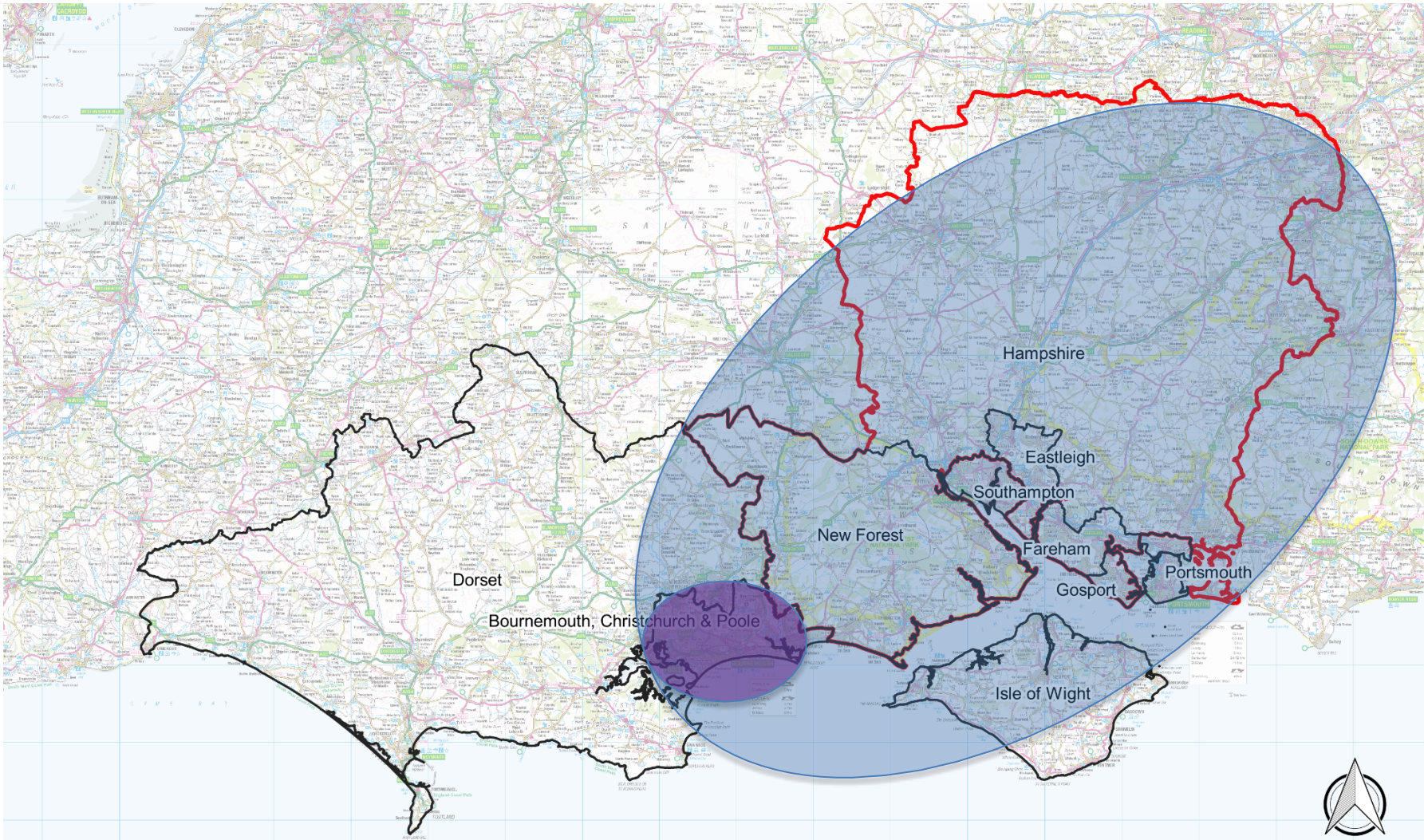
- District & UA Borders
- Hampshire CC Border





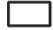

# Devolution Options Explored: Pan-Hampshire incl. BCP

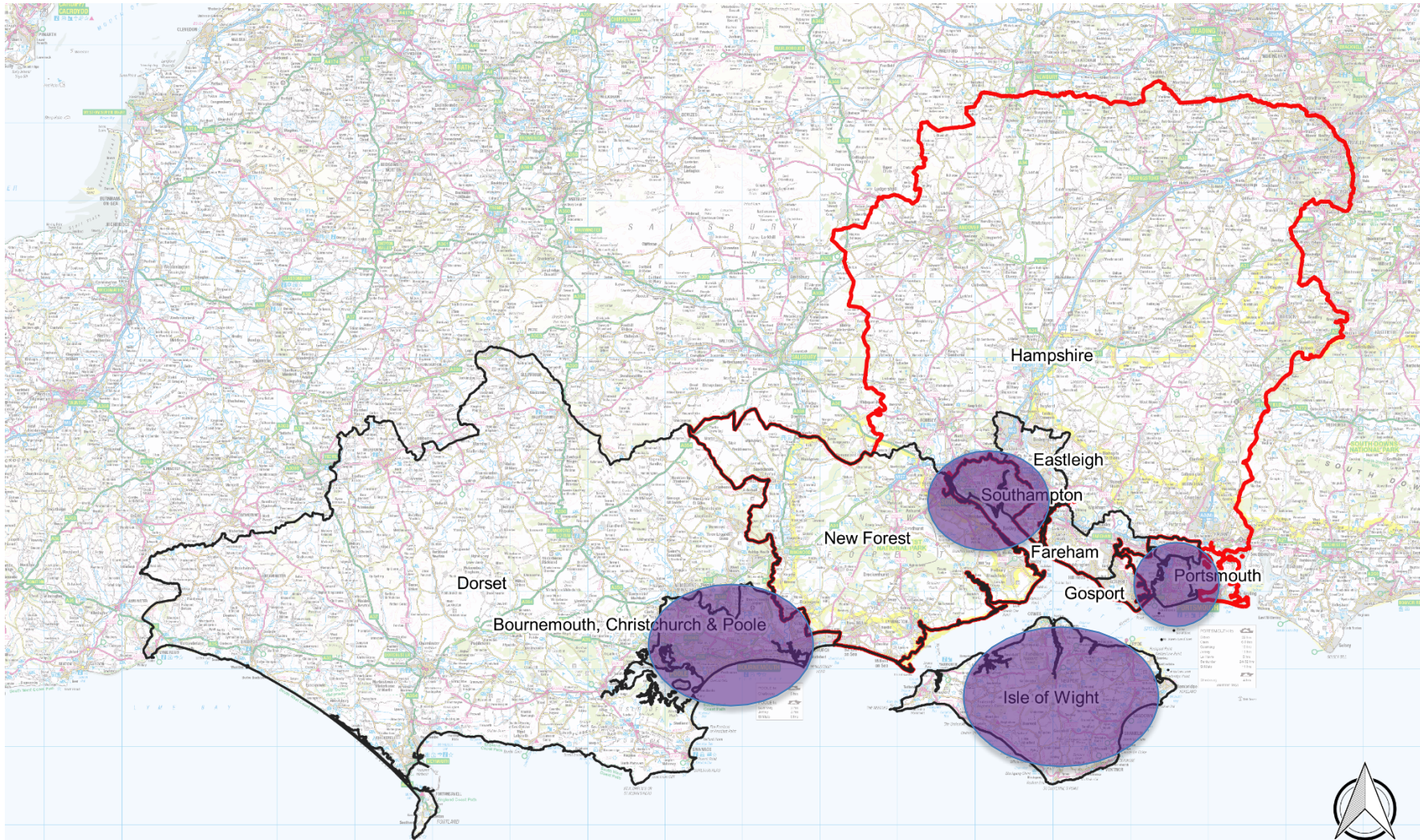
- District & UA Borders
- Hampshire CC Border





# Devolution Options Explored: Solent Unitary/Cities

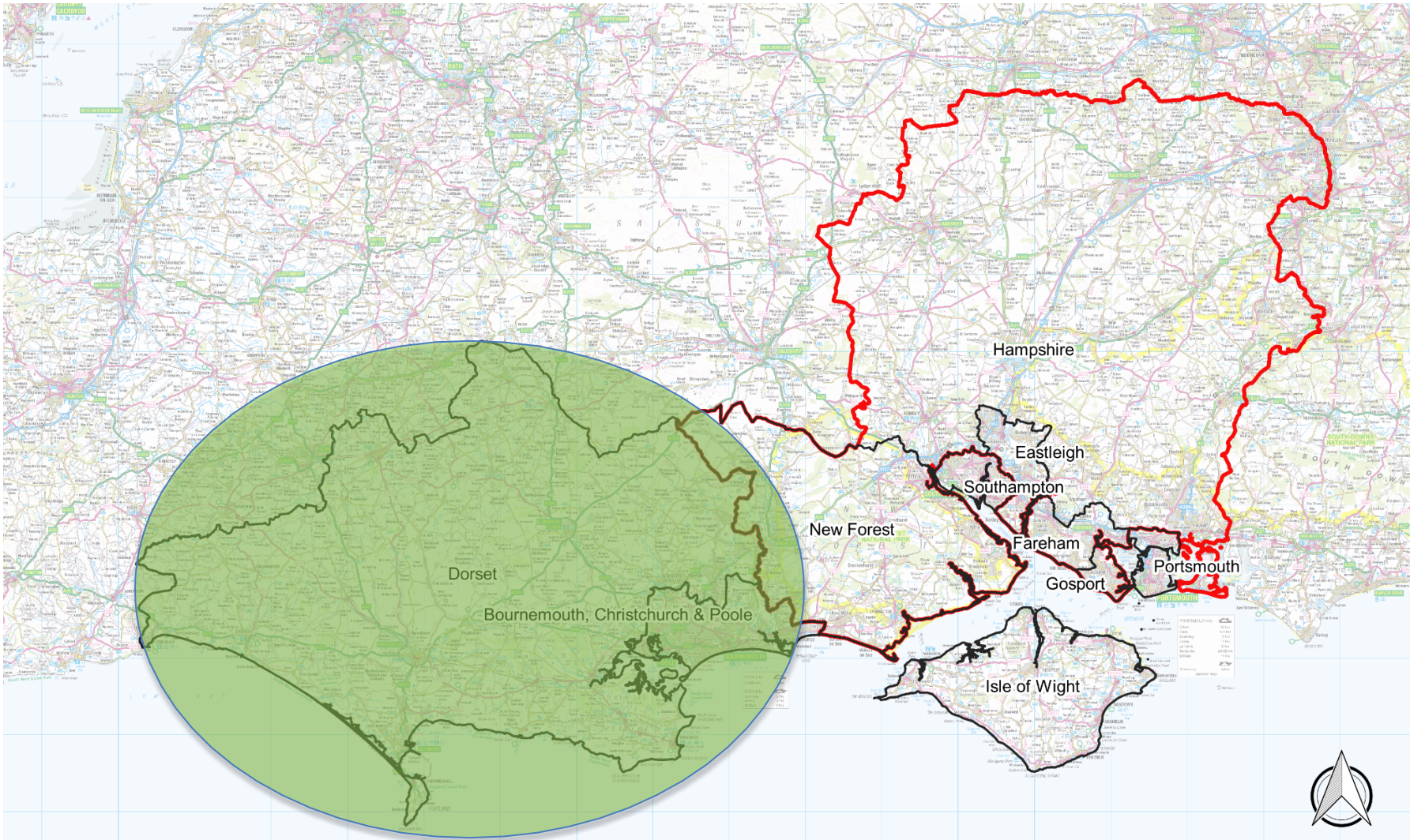
-  District & UA Borders
-  Hampshire CC Border





# Dorset county area

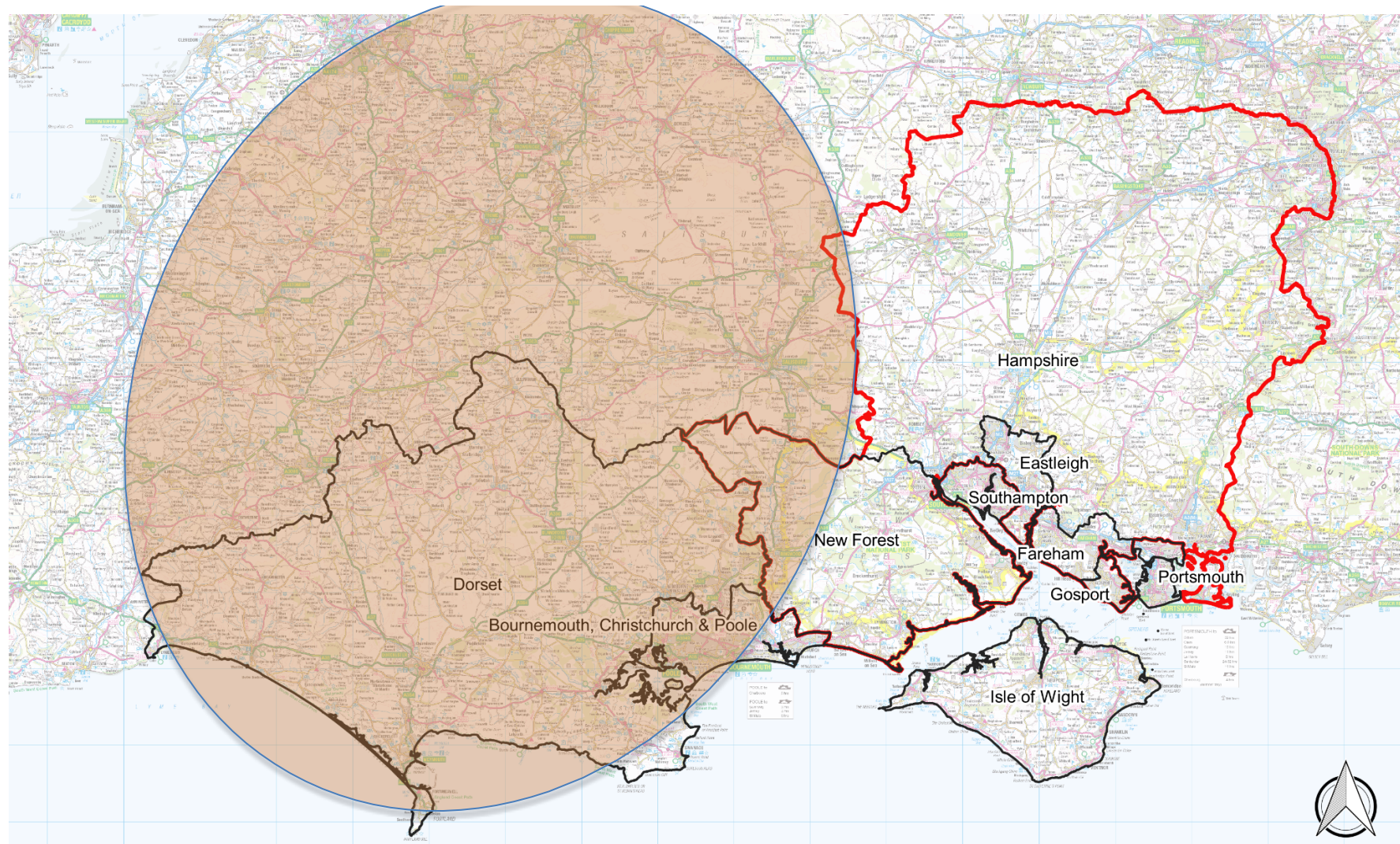
- District & UA Borders
- Hampshire CC Border





# Devolution Options Explored: Heart of Wessex Proposal

- District & UA Borders
- Hampshire CC Border





# Possible geographies

	Positives from BCP perspective	Challenges
<b>Heart of Wessex</b> BCP, Dorset, Wiltshire, Swindon, Somerset, North Somerset	<ul style="list-style-type: none"> <li>• Big area, mostly rural in size</li> <li>• 2.8m population, 2/3 in urban areas</li> <li>• 40% of SW</li> <li>• Supports N/S road to/from M4</li> <li>• Broadly similar challenges?</li> <li>• A seat at the Council of Regions?</li> <li>• Potentially less pain if unsuccessful</li> </ul>	<ul style="list-style-type: none"> <li>• Big area, does voice get lost?</li> <li>• A share of powers/funding</li> <li>• No existing economic connection</li> <li>• No existing relationships</li> <li>• No previous evidence base</li> <li>• Poor infrastructure connections</li> <li>• Everyone's second best option?</li> </ul>
<b>BCP+Dorset</b>	<ul style="list-style-type: none"> <li>• Existing relationships/structures</li> <li>• Existing evidence base</li> <li>• Potential space for housing</li> <li>• Travel to work areas</li> <li>• Some economic similarities/collaboration (Mnfr; Tourism)</li> <li>• Similar challenges (skills, infrastructure)</li> <li>• Recognised by HMG as Functional Economic Area</li> </ul>	<ul style="list-style-type: none"> <li>• Not big enough to influence HMG?</li> <li>• Would devo solve challenges?</li> <li>• Narrative needs to be urban led</li> <li>• Existing relationships/structures</li> </ul>
<b>BCP only</b>	<ul style="list-style-type: none"> <li>• Direct control (not shared)</li> <li>• Clear and easier governance</li> <li>• Powers and funding to bring benefits direct / address BCP challenges</li> <li>• Existing evidence base</li> <li>• Direct liaison with Government</li> </ul>	<ul style="list-style-type: none"> <li>• Not big enough under previous guidance</li> <li>• Likely no seat at Council of Regions/Nations</li> <li>• Would devo solve challenges?</li> </ul>



# Excluded geographies

	Positives from BCP perspective	Challenges
<b>Central South:</b> Looking eastwards, joining with Portsmouth and Southampton (and Isle of Wight).	<ul style="list-style-type: none"><li>• Similar areas – urban cities</li><li>• All are unitary councils</li><li>• Connected transport routes (train and car) into London</li></ul>	<ul style="list-style-type: none"><li>• Challenging geography area as some districts within Hampshire lie between the main conurbations</li><li>• Crosses not a different government region</li><li>• Crosses health boundaries</li><li>• Politically complex</li><li>• Few direct economic connections</li></ul>
<b>Pan-Hampshire:</b> wider footprint including Southampton, Portsmouth, the Isle of Wight and all of Hampshire.	<ul style="list-style-type: none"><li>• Larger scale</li><li>• Covers major strategic transport routes into and from London</li><li>• More influence with government</li></ul>	<ul style="list-style-type: none"><li>• Challenging geography area as some districts within Hampshire lie between the main conurbations</li><li>• Crosses not a different government region</li><li>• Crosses health boundaries</li><li>• Politically, even more complex</li><li>• Few direct economic connections</li></ul>



# Benefits + Best Area fit

Strategic Theme	Benefits to BCP	Why/What	Ideal Geographical Footprint (Best Fit)
<b>Skills</b>	Ensure businesses have access to the skilled talent they need	<ul style="list-style-type: none"> <li>A skilled workforce our local economy needs for the future</li> <li>Secure further investment to help create high additional high value jobs</li> <li>Devolution of Adult Education functions, incl local control of the Apprenticeship Levy</li> </ul>	1 BCP 2 BCP+Dorset
<b>Housing</b>	Address our housing pressures	<ul style="list-style-type: none"> <li>Additional investment in affordable schemes</li> <li>Reduce barriers to affordable housing delivery</li> <li>Create/further develop new delivery models</li> </ul>	1 BCP+Dorset
<b>Transport</b>	Improve local and regional transport	<ul style="list-style-type: none"> <li>Secure further investment with local prioritisation for existing and future schemes</li> <li>Strengthen integrated local transport, improve national rail links and stations</li> <li>Reduce congestion, accelerate carbon reduction and behaviour change</li> </ul>	1 BCP 2 Wessex
<b>Net Zero</b>	Meet our net zero ambitions and transitioning to a green economy	<ul style="list-style-type: none"> <li>Accelerate the transition to a green economy</li> <li>Secure investment into local grid infrastructure and coastal assets</li> <li>Devolution of DNO responsibility to enhance local energy security</li> </ul>	1 Wessex 2 BCP+Dorset
<b>Investment &amp; Development</b>	Deliver investment into Bournemouth Christchurch & Poole	<ul style="list-style-type: none"> <li>Secure revenue funding for feasibility studies and de-risking constraints for key development sites</li> <li>A longer term (10 year) capital grant programme to enable delivery</li> <li>Local retention of rates/taxes to re-invest into place improvements</li> </ul>	1 BCP
<b>Productivity &amp; Growth</b>	Drive productivity & growth	<ul style="list-style-type: none"> <li>Local democratic accountability for investment decisions in the local economy</li> <li>A strong voice for business and skills representatives</li> <li>Increase productivity and pay</li> </ul>	1 BCP 2 BCP+Dorset
<b>Business Support</b>	Create an inclusive, vibrant and sustainable local economy	<ul style="list-style-type: none"> <li>Continue to support high growth business sectors and our traditional strengths</li> <li>Easier for businesses to access information, advice and support</li> <li>Secure long-term investment into cultural and arts organisations</li> </ul>	1 BCP 2 BCP+Dorset 3 Wessex



Benefits of BCP only proposal:	Progress:
<ul style="list-style-type: none"><li>• Direct control (not shared)</li><li>• Clear and easier governance</li><li>• Powers and funding to bring benefits direct / address BCP challenges</li><li>• Focus on urban challenges in a restricted environment</li><li>• Closed economy</li><li>• Existing evidence base</li><li>• Direct liaison with Government</li><li>• Relevance to business partners</li><li>• Influence over predominantly rural neighbouring areas</li></ul>	<ul style="list-style-type: none"><li>• Explored devolution options since 2019</li><li>• Current informal high-level list of BCP asks/offers</li><li>• Proposal supports existing Council's Shared Vision for the BCP area</li><li>• Informal Cabinet discussions and formal engagement (Cabinet report Nov/Dec 22; CMB Cabinet Briefing/O&amp;S Sept 24)</li><li>• Explored possible options with neighbouring Councils (Wessex, Dorset, Hampshire, Central South/Solent)</li><li>• BCP only</li></ul>

# Key Dates

---

- 30 Sept: EOI submit EOI to HMG “subject to Cabinet approval”
- 23 Sept 1800hrs Overview & Scrutiny board “Devolution update”
- 23 Sept 1700hrs Wessex Devolution Leaders/CEO meeting
- 23 Sept 1500hrs Cabinet/CMB bi-weekly planning “Devolution”
- 18 Sept Group Leaders meeting